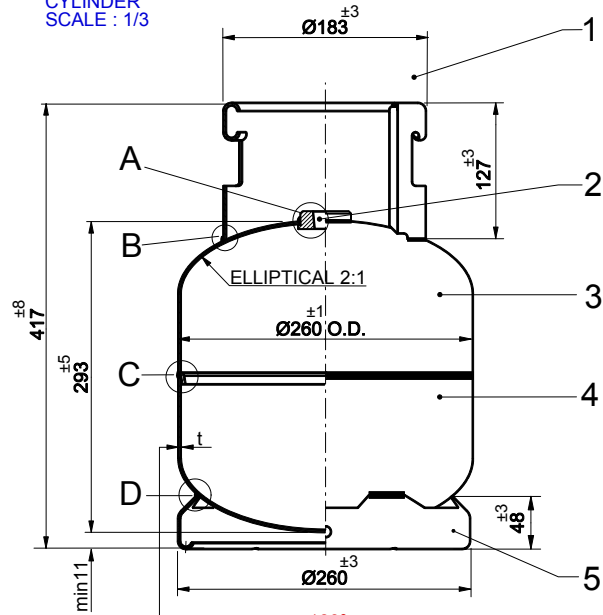
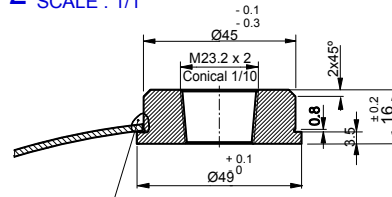


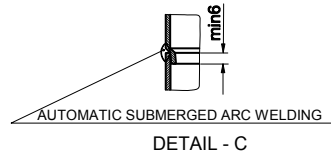
CYLINDER
SCALE : 1/3



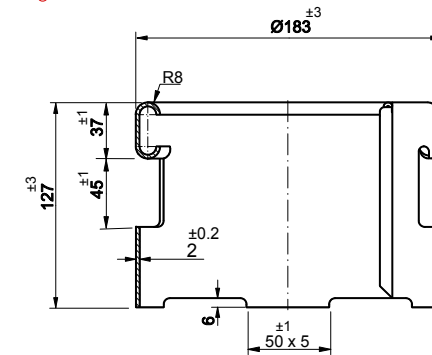
2 VALVE BOSS
SCALE : 1/1



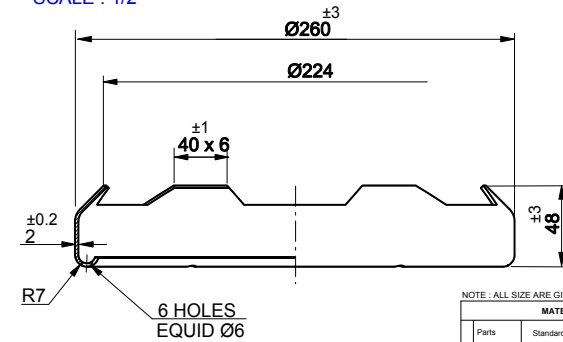
AUTOMATIC MIG / MAG WELDING
DETAIL - A



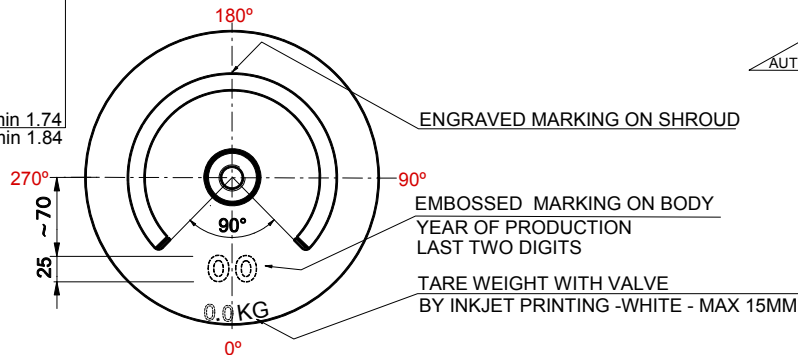
1 SHROUD
SCALE : 1/2



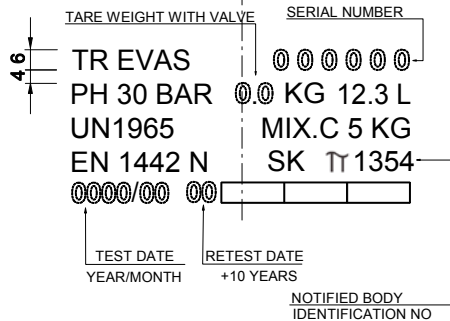
5 FOOTRING
SCALE : 1/2



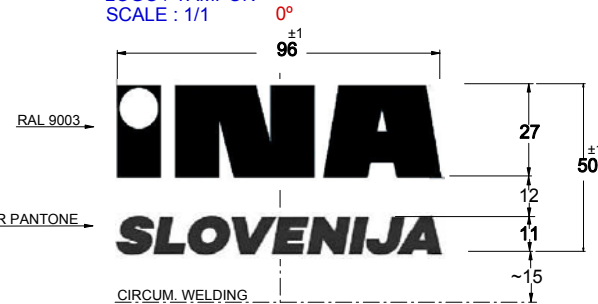
P310 : t = min 1.74
P265 : t = min 1.84



ENGRAVED MARKING ON SHROUD
SCALE : 1/1



LOGO / TAMPON
SCALE : 1/1



NOTE : ALL SIZE ARE GIVEN IN MM

MATERIAL DETAILS			
Parts	Standard	Yield Point N/mm ²	Technical Drawing No.
5 Foot Ring	EN 10225	-	10 - 079
4 Body Lower	P310 NB	310	50 - 054
3 Body Upper	P265 NB	280	-
2 Valve Boss	SAE 1020	-	40 - 045
1 Shroud	EN 10225	-	20 - 077

PRODUCTION METHODS	
Directive	2010/35/EU
Standard	EN 1442 : 2017 Acc.to ADR 2019
Heat Treatment	890 ° C - 930 ° C
Shot Blasting	SA 2.5
Zinc Coating	min 20 µm
Primer Coating	-
Painting	POWDER
Total Coating	min 80 µm
Other Notes	-

CYLINDER SPECIFICATION	
Content	PROPANE / BUTANE
Content Mass	5.1 KG / 6.1 KG
Volume Limits	min 12.3 L
Tare Limits	-
Test Pressure	30 BAR
Burst Pressure	67.5 BAR
Pneu. Pressure	-
Color (main)	RAL 5012
Color (logo)	RAL 9003 / SILVER PANTONE
Color (other)	-
Valve Type	-

APPROVAL		
Name	Date	Sign
Drawn by	N.AKSOY	10.07.17
Controlled by	T.DIVCOLLU	-
Approved by	T.TEZEL	-

IDENTIFICATION OF THE DRAWING		A2
SLOVENIA / INA		
12.3 L LPG CYLINDER		T
DRAWING NO.	SL - 12.3 - 02 - 38	
MASTER DRAWING NO.	12.3 - 01 - 099 / 12.3 - 01 - 044	



REVISION DETAILS			
R.No	Descriptions	Name	Date
12133	STANDARD AND ADR 2017 VERSION HAS BEEN UPDATED (SHROUD FORM REVISED)	TANER	08/19

