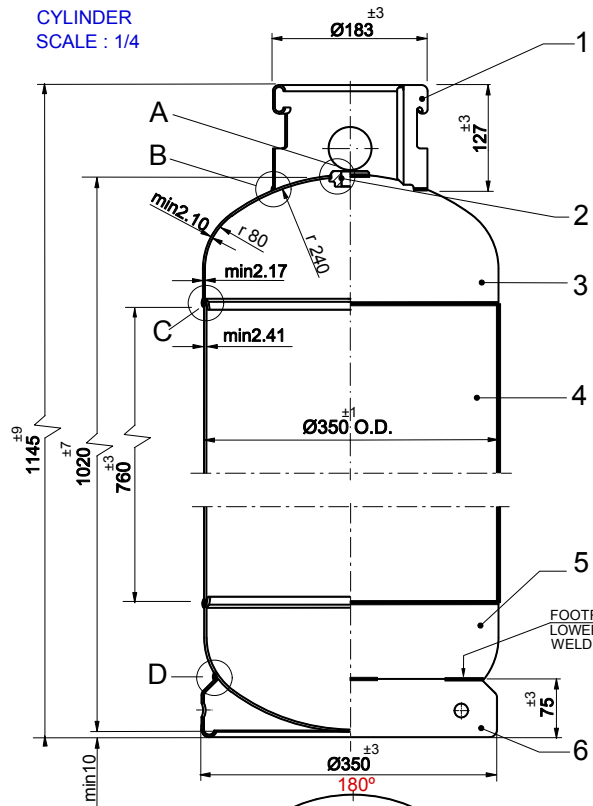
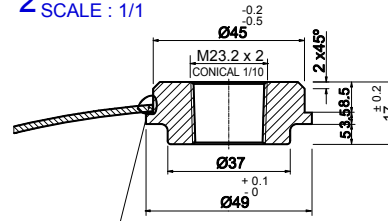


CYLINDER
SCALE : 1/4

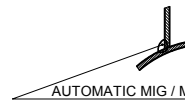


2 VALVE BOSS
SCALE : 1/1



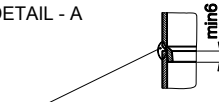
AUTOMATIC MIG / MAG WELDING

DETAIL - A



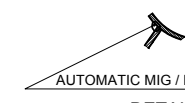
AUTOMATIC MIG / MAG WELDING

DETAIL - B



AUTOMATIC SUBMERGED ARC WELDING

DETAIL - C



AUTOMATIC MIG / MAG WELDING

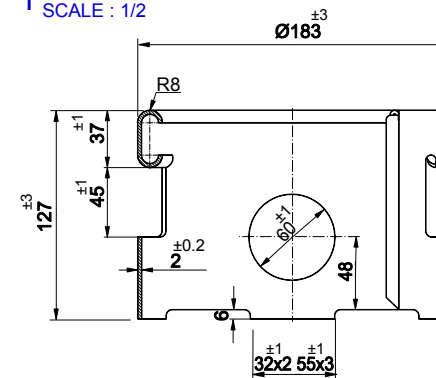
DETAIL - D



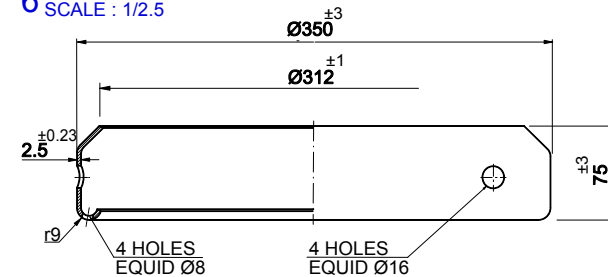
AUTOMATIC SUBMERGED LONGITUDINAL ARC WELDING

DETAIL - E

1 SHROUD
SCALE : 1/2



6 FOOTRING
SCALE : 1/2.5



NOTE : ALL SIZE ARE GIVEN IN MM

MATERIAL DETAILS			
Parts	Standard	Yield Point N/mm²	Technical Drawing No.
6 Foot Ring	EN 10225	-	10 - 046
5 Body Lower	P310 NB	320	50 - 063
3 Body Upper	SAE 1020	-	40 - 058
2 Valve Boss	EN 10225	-	20 - 078
1 Shroud	EN 10225	-	-

PRODUCTION METHODS	
Directive	2012/35/EU
Standard	EN 1442: 2017. Acc.to ADR 2019
Heat Treatment	890 ° C - 930 ° C
Shot Blasting	SA 2.5
Zinc Coating	min 20 µm
Primer Coating	min 20 µm
Painting	POLYESTER POWDER
Total Coating	min 80 µm
Other Notes	-

CYLINDER SPECIFICATION	
Content	LPG
Content Mass	35 KG
Volume Limits	min 87 L
Tare Limits	-
Test Pressure	30 BAR
Burst Pressure	67.5 BAR
Pneu. Pressure	6 BAR
Color (main)	RAL 5012
Color (logo)	RAL 9003 / SILVER PANTONE
Color (other)	-
Valve Type	-

APPROVAL		
Name	Date	Sign
Drawn by	NAKSOY	09.07.18
Controlled by	T.ĐI VOGLJU	
Approved by	T. TEŽEL	

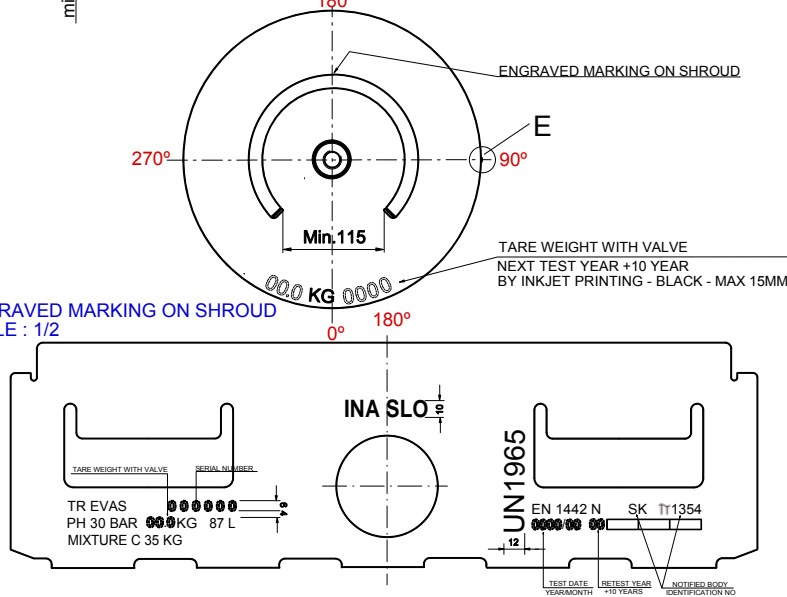
IDENTIFICATION OF THE DRAWING	
SLOVENIA / INA	
87 L LPG CYLINDER	

REVISION DETAILS	
R.No.	Descriptions
1	STANDARD AND ADR 2017 VERSION HAS BEEN UPDATED

DRAWING NO.	
SL - 87 - 02 - 41	

MASTER DRAWING NO.	
87 - 01 - 105	

ENGRAVED MARKING ON SHROUD
SCALE : 1/2



LOGO / SERIGRAPHY
SCALE : 1/2

