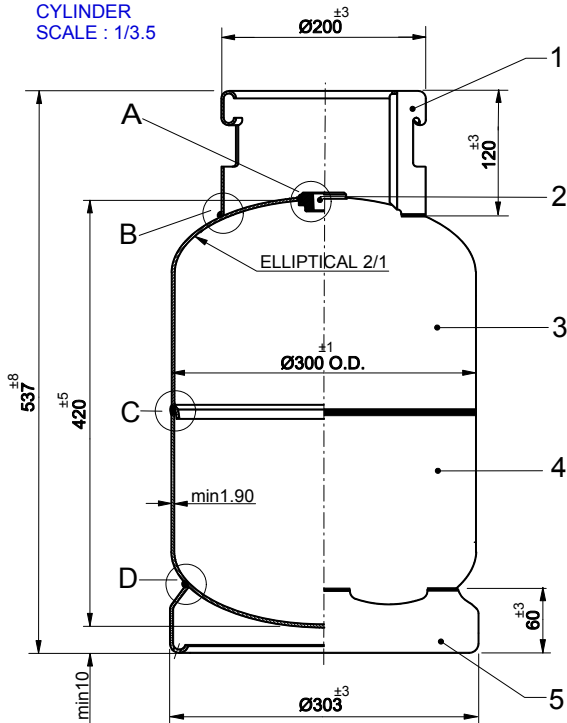
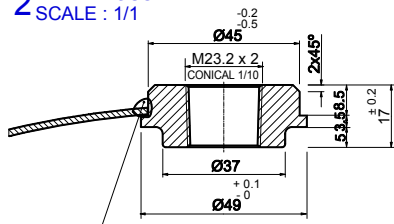


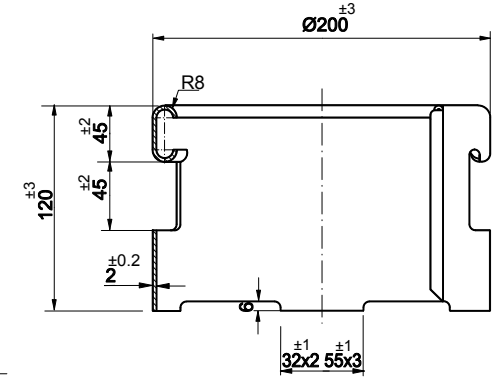
CYLINDER
SCALE : 1/3.5



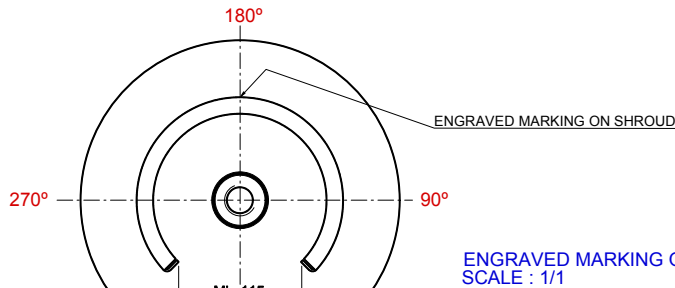
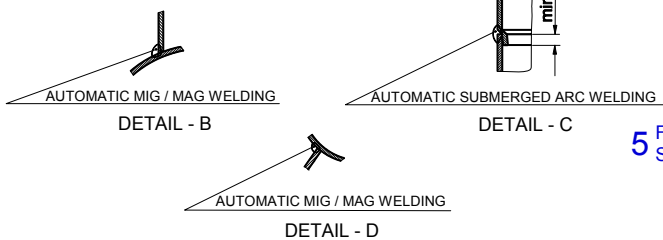
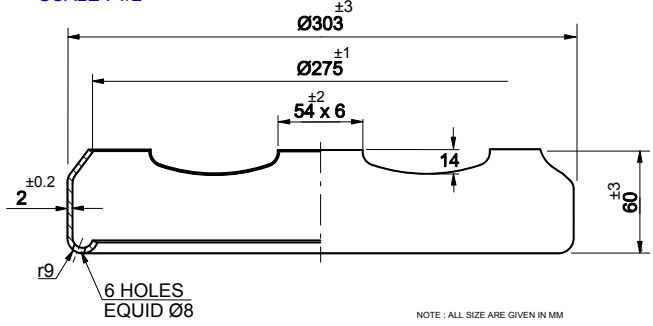
2 VALVE BOSS
SCALE : 1/1



1 SHROUD
SCALE : 1/2



5 FOOTRING
SCALE : 1/2

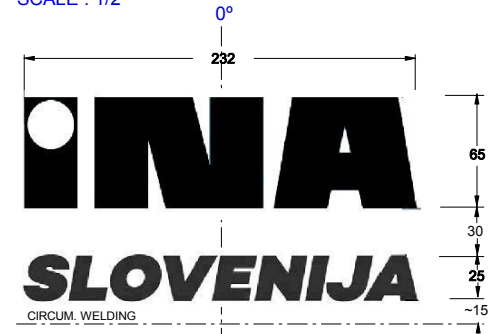


ENGRAVED MARKING ON SHROUD
SCALE : 1/1

TARE WEIGHT WITH VALVE
NEXT TEST YEAR +10 YEARS
BY INKJET PRINTING -WHITE - MAX 15MM

TARE WEIGHT WITH VALVE
INA SLO
TR EVAS 000000
PH 30 BAR 00.0KG 24.7 L
UN1965 MIXTURE C 10 KG
EN 1442 N SK T1354
TEST DATE YEAR/MONTH RETEST YEAR +10 YEARS NOTIFIED BODY IDENTIFICATION NO

LOGO / SERIGRAPHY
SCALE : 1/2



NOTE : ALL SIZE ARE GIVEN IN MM

MATERIAL DETAILS			
Parts	Standard	Yield Point N/mm²	Technical Drawing No.
5 Foot Ring	EN 10225	-	10 - 065
4 Body Lower	P310 NB	315	50 - 096
3 Body Upper	SAE 1020	-	40 - 058
2 Valve Boss	EN 10225	-	20 - 014
1 Shroud	EN 10225	-	-

PRODUCTION METHODS	
Directive	2010/35/EU
Standard	EN 1442 : 2017 Acc.to ADR 2019
Heat Treatment	890 ° C - 930 ° C
Shot Blasting	SA 2.5
Zinc Coating	min 20 µm
Primer Coating	min 20 µm
Painting	POLYESTER POWDER
Total Coating	min 80 µm
Other Notes	

CYLINDER SPECIFICATION	
Content	LPG
Content Mass	10 KG
Volume Limits	min 24.7 L
Tare Limits	10 KG-11 KG
Test Pressure	30 BAR
Burst Pressure	67.5 BAR
Pneu. Pressure	6 BAR
Color (main)	RAL 5012
Color (logo)	RAL 9003 / SILVER PANTONE
Color (other)	-
Valve Type	-

APPROVAL		
Name	Date	Sign
Drawn by	N.AKSOY	12.06.17
Controlled by	T.DEVIGÖLLÜ	
Approved by	T.TEZEL	

IDENTIFICATION OF THE DRAWING **A2**

SLOVENIA / INA	
24.7 L LPG CYLINDER T	
DRAWING NO.	SL - 24.7 - 02 - 37
MASTER DRAWING NO.	26 - 01 - 064

KONTROLLÜ KOPYA
Controlled Copy
YAYIN TARİHİ / ISSUED DATE **11.10.19**

REVISION DETAILS	
No	Description
22133	STANDARD AND ADR 2017 VERSION HAS BEEN UPDATED
11/19	STANDARD DATE AND ADR 2015 VERSION UPDATED
R.No	Descriptions

Name	Date
TANER	08/19
TANER	07/18

